

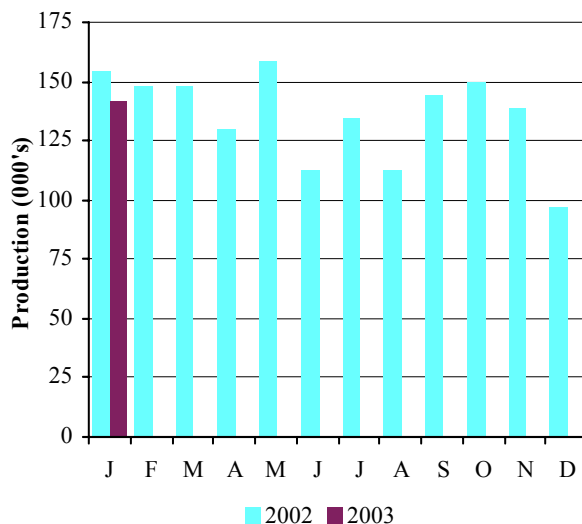
More British-built cars destined for export

Production figures released today by the Office for National Statistics show that:

▼ **Car production in January 2003** fell by **8.5 per cent**
 ▲ **Output for export markets** rose by **6.2 per cent**

Car Production						
	Jan 2002	Jan 2003	% chg.	YTD 02	YTD 03	% chg.
Total	154,368	141,269	-8.5%	154,368	141,269	-8.5%
Home	69,454	51,081	-26.5%	69,454	51,081	-26.5%
% of total	45.0%	36.2%		45.0%	36.2%	
Export	84,914	90,188	6.2%	84,914	90,188	6.2%
% of total	55.0%	63.8%		55.0%	63.8%	

Monthly Car Production 2002-2003



- Following growth of 19.7 per cent last January, figures released today report total car production down 8.5 per cent in January 2003.
- Production for export rose for the seventh consecutive month in January, up 6.2 per cent.
- Output for the home market fell by 26.5 per cent, after a 37 per cent rise in January 2002.

SMMT chief executive Christopher Macgowan commented, 'Total car production remained strong in January. Despite a drop on last year's exceptional figure, output was still up 9.6 per cent up compared to January 2001.'

He added, 'The real growth area remains in cars produced for export. But even in output for the home market, where numbers have eased in recent months, new models coming on stream at key car plants are likely to see things pick up later this year and into 2004.'

Press contacts:

Nikki Rooke

Tel: 020 7344 9263 nrooke@smtt.co.uk

Nigel Wonnacott

Tel: 020 7344 9219 nwonnacott@smtt.co.uk

January's CV output sees pause in recent growth

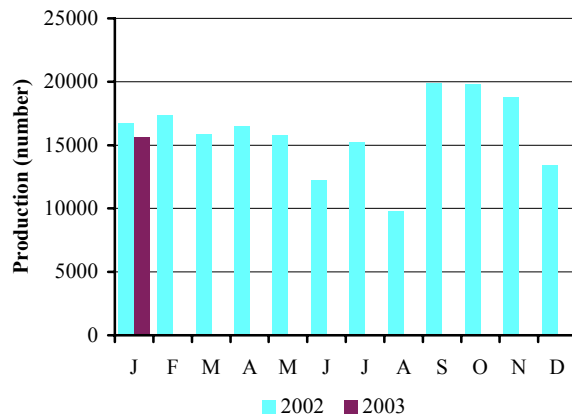
Production figures released today by the Office for National Statistics show that:

▼ **Total CV production in January 2003 fell 6.2 per cent**

Commercial Vehicles

	Jan 2002	Jan 2003	% chg.	YTD 2002	YTD 2003	% chg.
Total	16,697	15,656	-6.2%	16,697	15,656	-6.2%
Home	8,280	7,322	-11.6%	8,280	7,322	-11.6%
% of total	49.6%	46.8%		49.6%	46.8%	
Export	8,417	8,334	-1.0%	8,417	8,334	-1.0%
% of total	50.4%	53.2%		50.4%	53.2%	

Monthly CV Production 2002-2003



- January CV production fell 6.2 per cent to 15,656 units. This was the first drop since August last year.
- Home market output fell 11.6 per cent, while production for export fell marginally by one per cent.

Commenting on the figures, SMMT chief executive Christopher Macgowan said, 'January saw the first slowdown in commercial vehicle production since August last year. However, the figures are still encouraging. MG Rover entered the CV market last month and production of the MG Rover Express van helped to balance the loss of output from Seddon Atkinson and ERF. Exports are still the key to growth and the year ahead is expected to deliver modest gains with an annual total of around 200,000 units compared to last year's 191,315 units.'

Press contact

Robin Dickeson

Tel: 020 7344 9222 rdickeson@smmmt.co.uk

	PASSENGER CARS			COMMERCIAL VEHICLES		
	Total	For Home	For Export	Total	For Home	For Export
1991	1 236 900	631 515	605 385	217 141	106 424	110 717
1992	1 291 880	702 590	589 290	248 453	118 140	130 313
1993 a	1 375 524	842 648	532 876	193 467	102 320	91 147
1994	1 466 823	848 142	618 681	227 815	132 270	95 545
1995	1 532 084	787 473	744 611	233 011	140 634	92 377
1996	1 686 134	777 922	908 212	238 314	125 830	112 484
1997	1 698 001	736 090	961 911	237 706	134 304	103 402
1998	1 748 258	727 531	1 020 727	227 379	124 538	102 841
1999	1 786 623	648 146	1 138 477	185 905	110 983	74 922
2000	1 641 452	578 462	1 062 990	172 442	96 261	76 181
2001	1 492 365	598 111	894 254	192 873	96 654	96 219
2002	1 628 020	581 212	1 046 808	191 315	77 087	114 228
2000 Q1	494 311	179 401	314 910	49 972	24 666	25 306
2000 Q2	433 240	140 548	292 692	52 061	27 345	24 716
2000 Q3	335 106	145 558	189 548	29 249	18 588	10 661
2000 Q4	378 795	112 955	265 840	41 160	25 662	15 498
2001 Q1	387 100	160 646	226 454	51 623	31 952	19 671
2001 Q2	372 395	142 864	229 531	49 675	26 436	23 239
2001 Q3	335 790	152 753	183 037	43 347	21 032	22 315
2001 Q4	397 080	141 848	255 232	48 228	17 234	30 994
2002 Q1	449 755	194 579	255 176	49 940	24 630	25 310
2002 Q2	400 529	119 032	281 497	44 504	16 226	28 278
2002 Q3	391 850	149 633	242 217	44 900	18 966	27 934
2002 Q4	385 886	117 968	267 918	51 971	19 265	32 706
2001 Jan	128 921	50 675	78 246	17 580	11 315	6 265
2001 Feb	124 163	55 434	68 729	16 290	10 085	6 205
2001 Mar	134 016	54 537	79 479	17 753	10 552	7 201
2001 Apr	112 547	45 865	66 682	14 172	8 097	6 075
2001 May	127 176	46 614	80 562	15 563	8 418	7 145
2001 Jun	132 672	50 385	82 287	19 940	9 921	10 019
2001 Jul	114 878	50 943	63 935	14 055	6 427	7 628
2001 Aug	89 350	43 180	45 540	11 960	5 994	5 966
2001 Sep	131 562	58 000	73 562	17 332	8 611	8 721
2001 Oct	145 984	53 206	92 778	17 607	6 697	10 910
2001 Nov	144 989	51 841	93 148	17 588	6 051	11 537
2001 Dec	106 107	36 801	69 306	13 033	4 486	8 547
2002 Jan	154 368	69 454	84 914	16 697	8 280	8 417
2002 Feb	147 552	65 707	81 845	17 389	10 016	7 373
2002 Mar	147 835	59 418	88 417	15 854	6 334	9 520
2002 Apr	129 541	35 958	93 583	16 534	5 451	11 083
2002 May	158 236	49 232	109 004	15 752	5 820	9 932
2002 Jun	112 752	33 842	78 910	12 218	4 955	7 263
2002 Jul	134 549	49 685	84 864	15 217	5 323	9 894
2002 Aug	112 803	45 771	67 032	9 793	3 704	6 089
2002 Sep	144 498	54 177	90 321	19 890	7 939	11 951
2002 Oct	149 654	51 672	97 982	19 769	7 259	12 510
2002 Nov	138 765	40 020	98 746	18 806	7 647	11 159
2002 Dec	97 467	26 276	71 191	13 396	4 359	9 037
2003 Jan	141 269	51 081	90 188	15 656	7 322	8 334

Percentage change for latest three months on:

Previous three months	-7.2	-22.6	1.9	-3.2	2.3	-6.6
Same period last year	-6.9	-25.8	5.2	1.1	2.7	0.1

a - 5 week month or 14 week quarter or 53 week year

Source: Office for National Statistics

